

# UHPCC

## 内墙装饰板产品手册

Interior Wall Decorative Panel Product Manual



宁波博阳城市运营管理服务有限公司

Ningbo Boyang Urban Operation Management Service Co., Ltd.

## **1.Product Introduction:**

The decorative interior wall panels utilize 8mm UHPC (Ultra-High Performance Concrete) as the structural base plate, with a surface coated with high-quality PVC finish or other functional decorative materials. Through a stable composite manufacturing process, this results in a lightweight yet high-strength integrated wall panel system. The UHPC base plate ensures exceptional structural stability and durability, while the surface coating delivers both aesthetic appeal and practical benefits such as wear resistance and easy maintenance.

The product emits no VOCs (Zero VOCs) during both production and use, meeting the stringent health and environmental standards required for modern indoor spaces. Featuring a modular design, the wall panels offer simple and efficient installation, significantly reducing construction time. Additionally, they possess excellent waterproof and moisture-resistant properties, making them suitable for various indoor applications such as residential, public, and commercial spaces while balancing functionality, safety, and design aesthetics.

## **2.product superiority:**

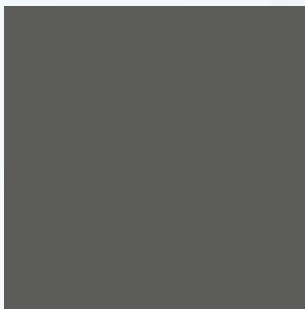
Install the wall stud brackets, then secure the panels with anchoring fasteners. After adjusting the flatness, tighten the fasteners. The entire process is fully mechanized, enabling faster construction timelines and improved wall renovation efficiency.

The product features lightweight yet high strength, with its molecular-level dense structure providing resistance to ultraviolet aging and extreme cold conditions, significantly extending the service life of walls.

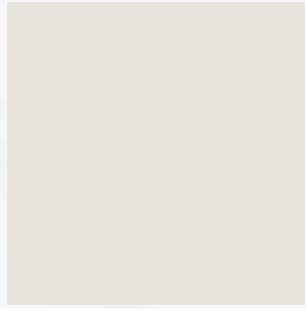
Inorganic materials exhibit strong weather resistance and minimal fading, ensuring the walls maintain their attractive appearance over time. They offer a wide range of colors and diverse surface finishes.

### 3. Product Style:

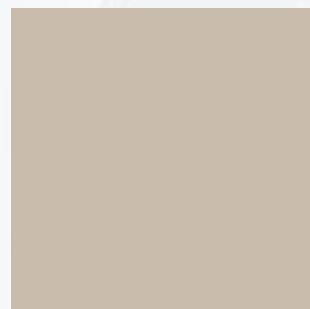
#### Solid Color Series:



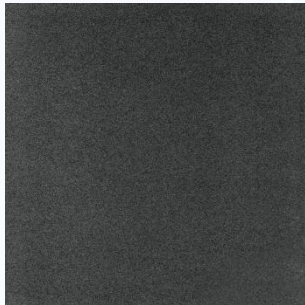
Clear Board



frosty



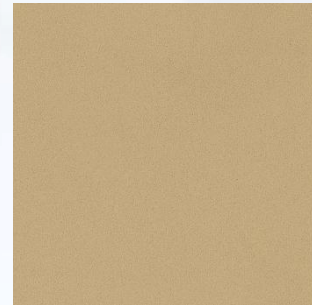
Warm Rice



Mountain Ash



Sesame Light Gray



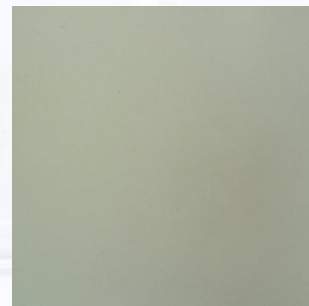
amber



Cherry Blossom Pink

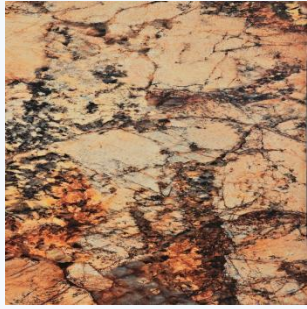


Smog Blue



mint green

### **Stone-look Series:**



Cloud pattern in light brown



gentle



Light brown cloud

### **Wood-look Series:**



Technology Wood 1

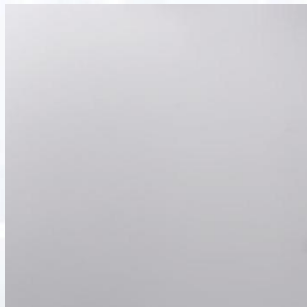


Technology Wood 2



Technology Wood 3

### **Classic Series:**



Yu Run Bai



Pure Weave Surface



Textured fabric pattern



Technology Wood 4



#### **4.Size of product:**

Width: Maximum 1200 mm    Length: Maximum 3600 mm

stock size : 300\*600mm、600\*600mm、600\*1200mm

#### **5.installation instructions:**

1.On-site layout and positioning: Based on the construction drawings, accurately mark the lines on the building substrate to establish the reference lines for wall installation and the positioning of each component.

2. Pre-embedded post-installed embedded parts: Install the post-installed embedded parts at the specified locations according to the layout markings, ensuring their stability and alignment (horizontal and vertical) meet the specified requirements.

3. Install the main keel: Connect and secure the main keel to the rear embedded components, adjust the spacing, vertical alignment, and horizontal level of the keel, and complete the installation and reinforcement of the main keel.

4. Install secondary keels: Based on the main keel, install secondary keels at the specified design intervals, ensuring tight connections between the secondary and main keels for overall structural stability.

5. Install the mounting bracket assembly: Install the mounting bracket at the predetermined position on the secondary keel, verify its installation accuracy, and ensure a secure and tight connection with the keel.

6. Panel installation and fixation: Pre-fix the curtain wall panels with their corresponding mounting hardware, then install the assembled panel-hanger system onto the mounting brackets for initial positioning.

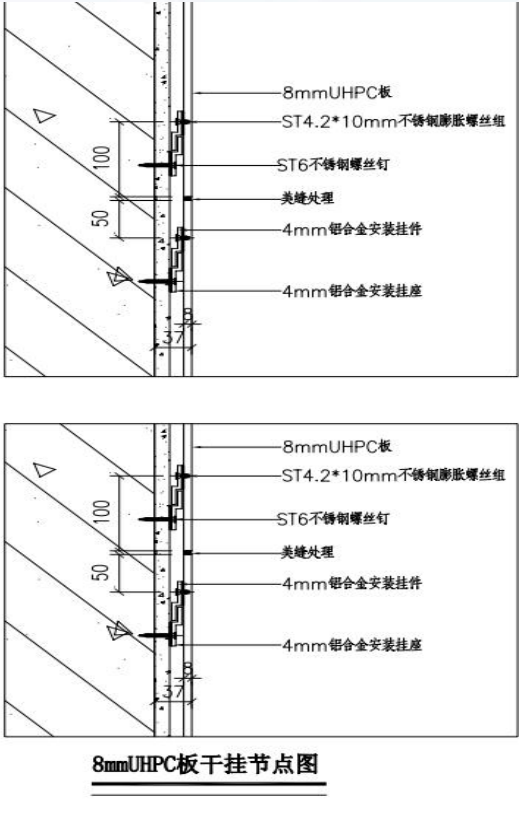
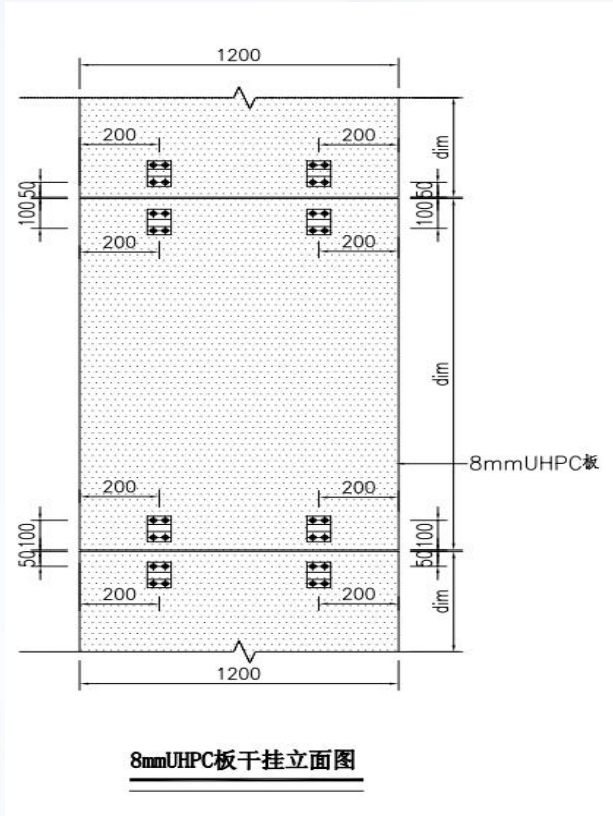
7. Overall leveling and calibration: Perform precise adjustments to the horizontal, vertical alignment, and spacing of the installed curtain wall panels to ensure a smooth surface and uniform gaps, then complete the final fixation.

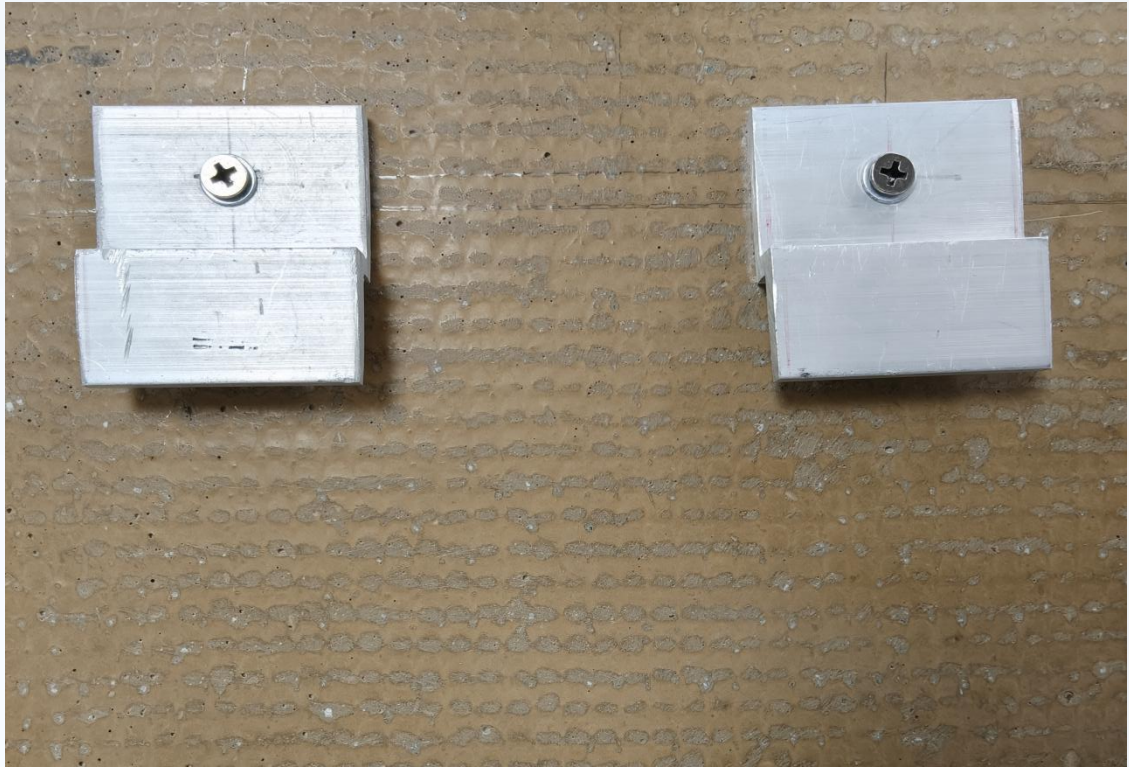
8. Acceptance and Maintenance Inspection: Verify the secure fixation, visual

integrity, and overall coordination of each panel.

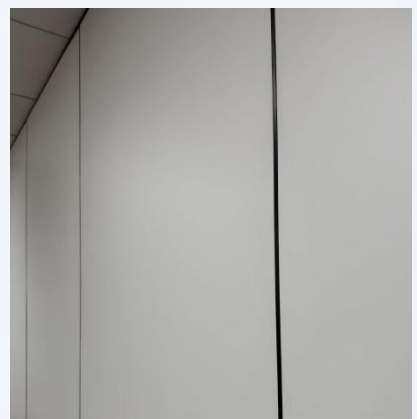
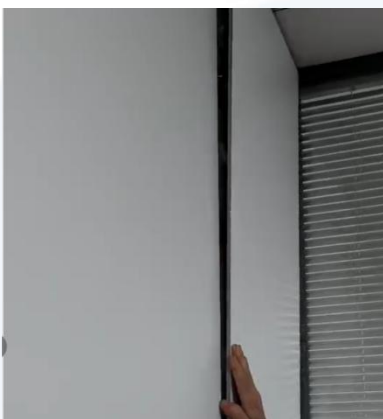
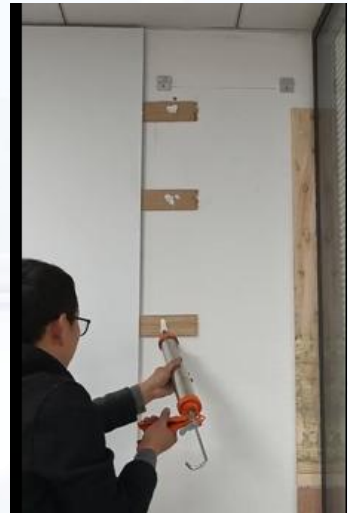
Record the installation data and complete the final acceptance inspection.

Installation example diagram:





### Installation Step Guide:



## Cosmetic result :

